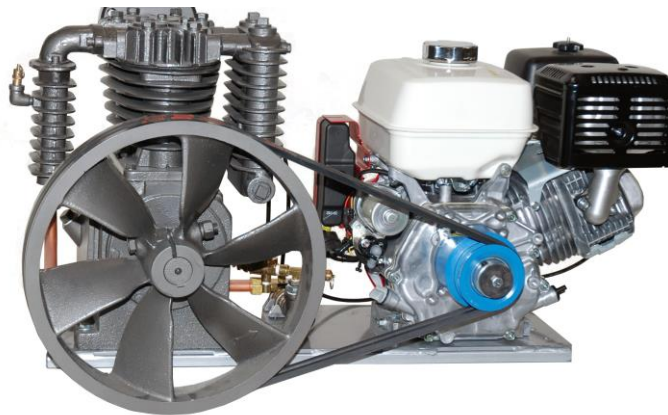
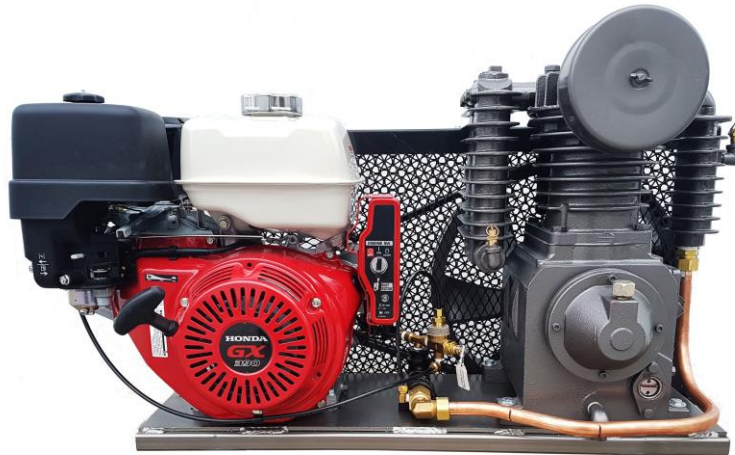


INDUSTRIAL AIR COMPRESSORS

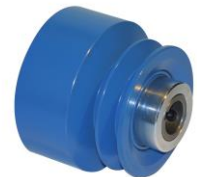


NB-13-TP-G

Ideal for highway service trucks

- ✓ Industrial quality **cast iron** pump
- ✓ Oil sight glass for rapid level checks
- ✓ Oil drain extension for easy oil changes
- ✓ 13 HP Honda engine – **Guaranteed 3 years**
- ✓ Automatic throttle control for economic operation
- ✓ Low engine oil alert system
- ✓ 12 volt electric start
- ✓ 3 amp alternator
- ✓ Emergency recoil starter
- ✓ Factory tested, shipped with proper oil level and **READY TO WORK!**

POWERED by HONDA™



Includes pulley clutch for easy cold weather starting

SPECIFICATIONS

Model Number	HP	Gal.	Pump	Cyl.	RPM	Piston Displ.	CFM @ 150	Size (inches)			Weight (lbs.)
								L	W	H	
NB-13-TP-G	13	N/A	NT-5C	2	795	30.7	24.5	41	18	22	280

Due to continuing product improvement, specifications and features are subject to change. Pump warranted for 5 full years.